

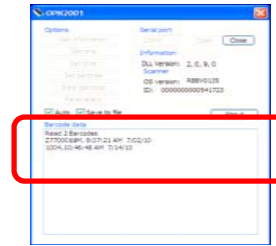
Scan barcode at your work place



Connect Scanner into Your Laptop with USB cable



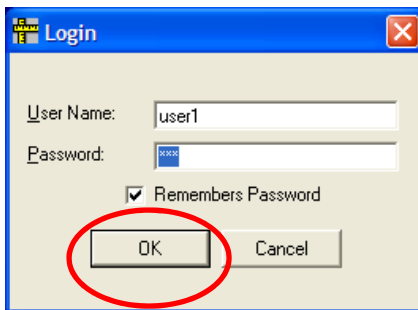
Double click "OPN-2001" icon on your Desktop and "Run"



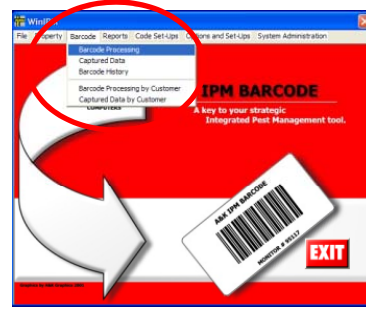
You can see the captured data



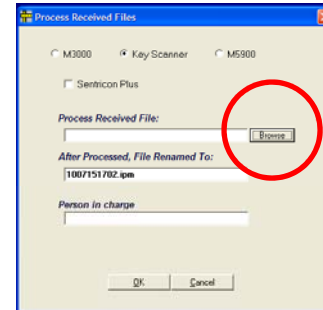
Click "WinIPM" icon On your Desktop



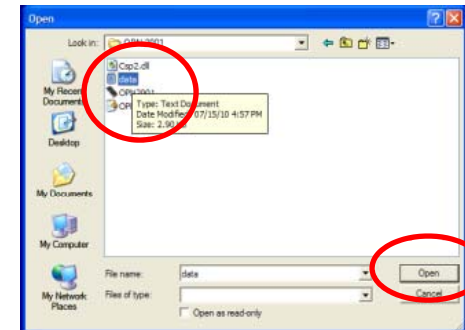
Click "OK" password was already saved



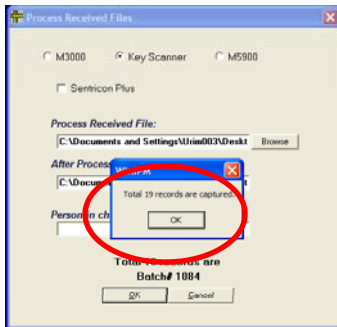
Select "Barcode" menu and "Barcode Processing"



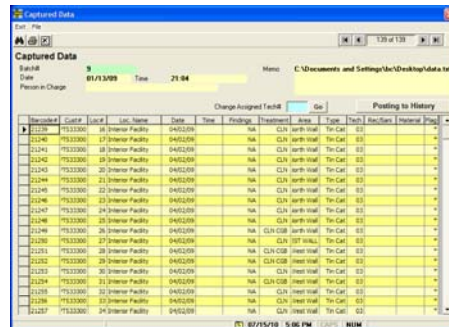
Click "Browse" icon on the screen



Select "Data" file and Click "Open or OK"



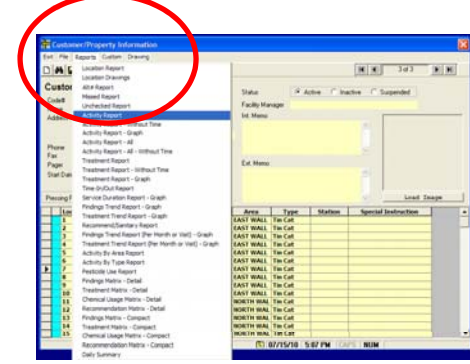
You can see Captured Data count



If you click "OK" icon, then You can see captured data



Click "Property" and select correct property.



Make a report based on the captured data